

ALSEA SCHOOL DISTRICT

NEW VOC SHOP BUILDING 35% PROGRESS SET - 11/11/21

PHASE 1a.3

SHEET SCHEDULE:

A0.0 Cover Sheet

CIVIL

ARCHITECTURAL

A0.2 Site Plan - Overall
A0.4 Site Plan - Enlarged

A3.1 Floor Plan - Ground Floor
A3.2 Floor Plan - Mechanical Platform

A5.1 Exterior Elevations
A5.2 Exterior Elevations

A7.1 Building Sections A & B
A7.2 Building Sections C & 1
A7.3 Building Sections 2 & 3

ELECTRICAL

MECHANICAL & PLUMBING



301 SOUTH 3rd STREET
ALSEA, OREGON 97324

ALSEA SCHOOL DISTRICT
1a.3: NEW VOC SHOP BUILDING



CB Construction
1202 Adams Avenue
LaGrande, OR 97850



STRAIGHTLINE
ARCHITECTURE

4521 South Cloverdale Road
Suite 102 - Boise, Idaho 83709
P: 208.991.0855
F: Scott@Straightline.biz
W: www.StraightlineArchitects.com

Date: 8-6-2021
Project: ALS-1821
Version History: V1.0
PHASES (PH):

ISSUE: 11-9-21

BID & AGENCY ISSUE

DRAWING NO.

A0.0

Cover sheet

OWNER:



Address:

ALSEA SCHOOL DISTRICT
301 SOUTH 3rd STREET
ALSEA, OREGON 97324

CONSTRUCTION MANAGER (CM/GC):



Address:

CB Construction
1202 Adams Avenue
LaGrande, Oregon 97850

Contact:

Derek Howard
Office: 541.786.5315
Email: dhoward@cbconst.us

ARCHITECT:



Address:

STRAIGHTLINE Architects
4521 South Cloverdale Road
Suite 102
Boise, Idaho 83709

Contact:

Scott Marshall, AIA - NCARB, Principal
Office: 208.991.0855
Email: Scott@Straightline.biz

ELECTRICAL ENGINEER:



Address:

E2CO
800 S. Industry Way, Suite 350
Meridian, Idaho 83642

Contact:

Jon Van Stone, PE, Principal
Office: 208-378-4450
Email: jvanstone@e2co.com

MECHANICAL ENGINEER:



Address:

VALUE ENGINEERING INC.
1406 N. Main Street, Suite 107
Meridian, ID 83642

Contact:

Tyson McFall, P.E., Principal
Office: 208-703-9440
Email: Tyson@v-engineering.com

STRUCTURAL ENGINEER:



Address:

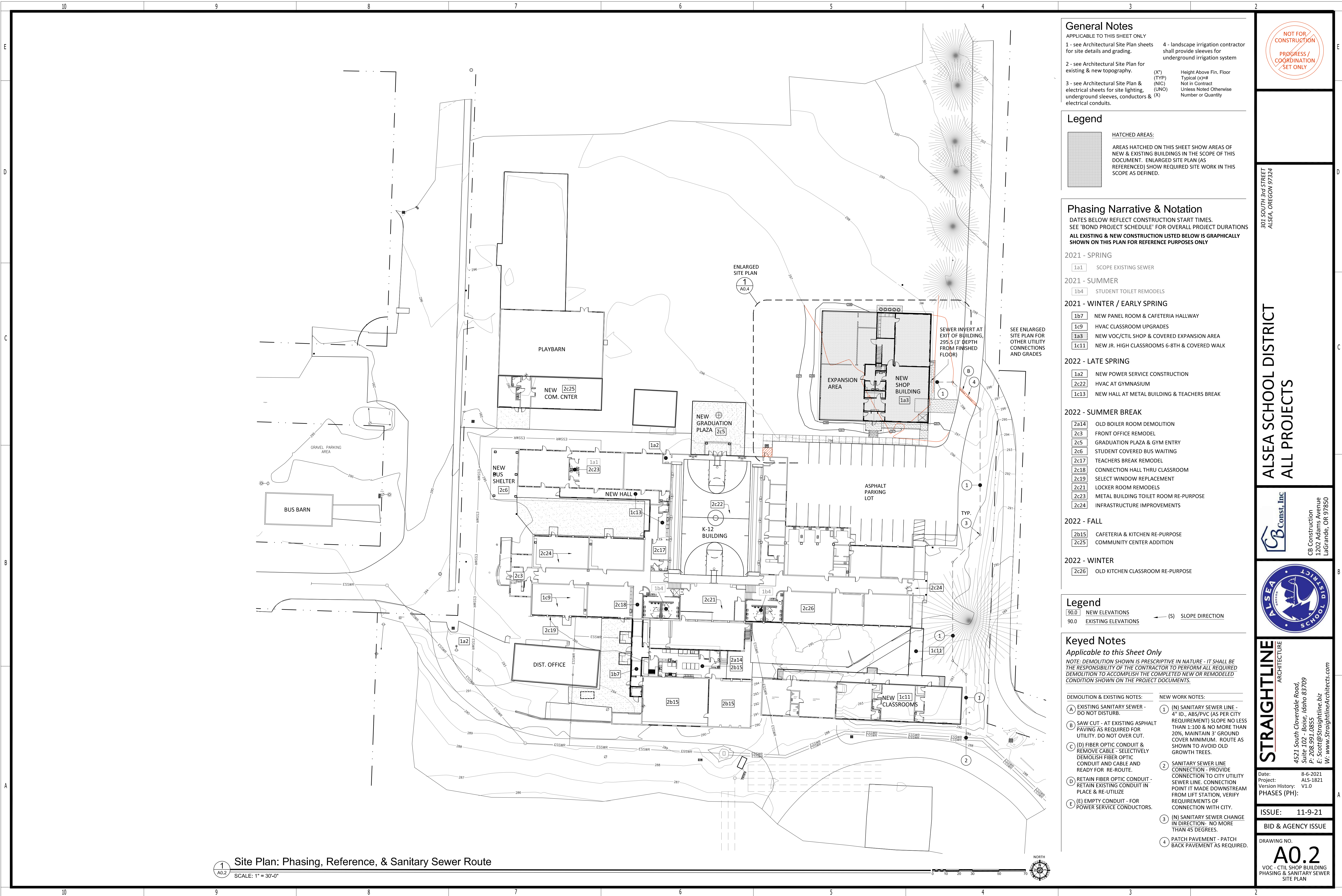
CBSE STRUCTURAL ENGINEERING
1202 Adams Avenue
LaGrande, Oregon 97850

Contact:

Derek Howard
Office: 541.786.5315
Email: dhoward@cbconst.us

CIVIL ENGINEER:

VICINITY MAP:



General Notes

APPLICABLE TO THIS SHEET ONLY

1 - see Architectural Site Plan sheets for site details and grading.

2 - see Architectural Site Plan for existing & new topography.

3 - see Architectural Site Plan & electrical sheets for site lighting, underground sleeves, conductors & electrical conduits.

4 - landscape irrigation contractor shall provide sleeves for underground irrigation system

(X*) Height Above Fin. Floor
(NIC) Typical (x)=#
(UNO) Not in Contract
(X) Unless Noted Otherwise
Number or Quantity

Legend

HATCHED AREAS:

AREAS HATCHED ON THIS SHEET SHOW AREAS OF NEW & EXISTING BUILDINGS IN THE SCOPE OF THIS DOCUMENT. ENLARGED SITE PLAN (AS REFERENCED) SHOW REQUIRED SITE WORK IN THIS SCOPE AS DEFINED.

Phasing Narrative & Notation

DATES BELOW REFLECT CONSTRUCTION START TIMES. SEE 'BOND PROJECT SCHEDULE' FOR OVERALL PROJECT DURATIONS
ALL EXISTING & NEW CONSTRUCTION LISTED BELOW IS GRAPHICALLY SHOWN ON THIS PLAN FOR REFERENCE PURPOSES ONLY

2021 - SPRING

1a1 SCOPE EXISTING SEWER

2021 - SUMMER

1b4 STUDENT TOILET REMODELS

2021 - WINTER / EARLY SPRING

1b7 NEW PANEL ROOM & CAFETERIA HALLWAY
1c9 HVAC CLASSROOM UPGRADES
1a3 NEW VOC/CTIL SHOP & COVERED EXPANSION AREA
1c11 NEW JR. HIGH CLASSROOMS 6-8TH & COVERED WALK

2022 - LATE SPRING

1a2 NEW POWER SERVICE CONSTRUCTION
2c22 HVAC AT GYMNASIUM
1c13 NEW HALL AT METAL BUILDING & TEACHERS BREAK

2022 - SUMMER BREAK

2a14 OLD BOILER ROOM DEMOLITION
2c3 FRONT OFFICE REMODEL
2c5 GRADUATION PLAZA & GYM ENTRY
2c6 STUDENT COVERED BUS WAITING
2c17 TEACHERS BREAK REMODEL
2c18 CONNECTION HALL THRU CLASSROOM
2c19 SELECT WINDOW REPLACEMENT
2c21 LOCKER ROOM REMODELS
2c23 METAL BUILDING TOILET ROOM RE-PURPOSE
2c24 INFRASTRUCTURE IMPROVEMENTS

2022 - FALL

2b15 CAFETERIA & KITCHEN RE-PURPOSE
2c25 COMMUNITY CENTER ADDITION

2022 - WINTER

2c26 OLD KITCHEN CLASSROOM RE-PURPOSE

Legend

90.0 NEW ELEVATIONS
90.0 EXISTING ELEVATIONS

(S) SLOPE DIRECTION

Keyed Notes

Applicable to this Sheet Only

NOTE: DEMOLITION SHOWN IS PRESCRIPTIVE IN NATURE - IT SHALL BE THE RESPONSIBILITY OF THE CONTRACTOR TO PERFORM ALL REQUIRED DEMOLITION TO ACCOMPLISH THE COMPLETED NEW OR REMODELED CONDITION SHOWN ON THE PROJECT DOCUMENTS.

DEMOLITION & EXISTING NOTES:

- (A) EXISTING SANITARY SEWER - DO NOT DISTURB.
(B) SAW CUT - AT EXISTING ASPHALT PAVING AS REQUIRED FOR UTILITY. DO NOT OVER CUT.
(C) (D) FIBER OPTIC CONDUIT & REMOVE CABLE - SELECTIVELY DEMOLISH FIBER OPTIC CONDUIT AND CABLE AND READY FOR RE-ROUTE.
(D) RETAIN FIBER OPTIC CONDUIT - RETAIN EXISTING CONDUIT IN PLACE & RE-UTILIZE
(E) EMPTY CONDUIT - FOR POWER SERVICE CONDUCTORS.

NEW WORK NOTES:

- (1) (N) SANITARY SEWER LINE - 4" ID., ABS/PVC (AS PER CITY REQUIREMENT) SLOPE NO LESS THAN 1:100 & NO MORE THAN 20%. MAINTAIN 3" GROUND COVER MINIMUM. ROUTE AS SHOWN TO AVOID OLD GROWTH TREES.
(2) SANITARY SEWER LINE CONNECTION - PROVIDE CONNECTION TO CITY UTILITY SEWER LINE. CONNECTION POINT IT MADE DOWNSTREAM FROM LIFT STATION, VERIFY REQUIREMENTS OF CONNECTION WITH CITY.
(3) (N) SANITARY SEWER CHANGE IN DIRECTION- NO MORE THAN 45 DEGREES.
(4) PATCH PAVEMENT - PATCH BACK PAVEMENT AS REQUIRED.

1 Site Plan: Phasing, Reference, & Sanitary Sewer Route

A0.2 SCALE: 1" = 30'-0"

NOT FOR CONSTRUCTION
PROGRESS / COORDINATION SET ONLY

301 SOUTH 3rd STREET
ALSEA, OREGON 97324

ALSEA SCHOOL DISTRICT
ALL PROJECTS

CB Const, Inc.

CB Construction
1202 Adams Avenue
LaGrande, OR 97850



STRAIGHTLINE ARCHITECTURE

4521 South Cloverdale Road
Suite 102 - Boise, Idaho 83709
P: 208.991.0855
F: Scott@straightline.biz
W: www.straightlinearchitects.com

Date: 8-6-2021
Project: ALS-1821
Version History: V1.0

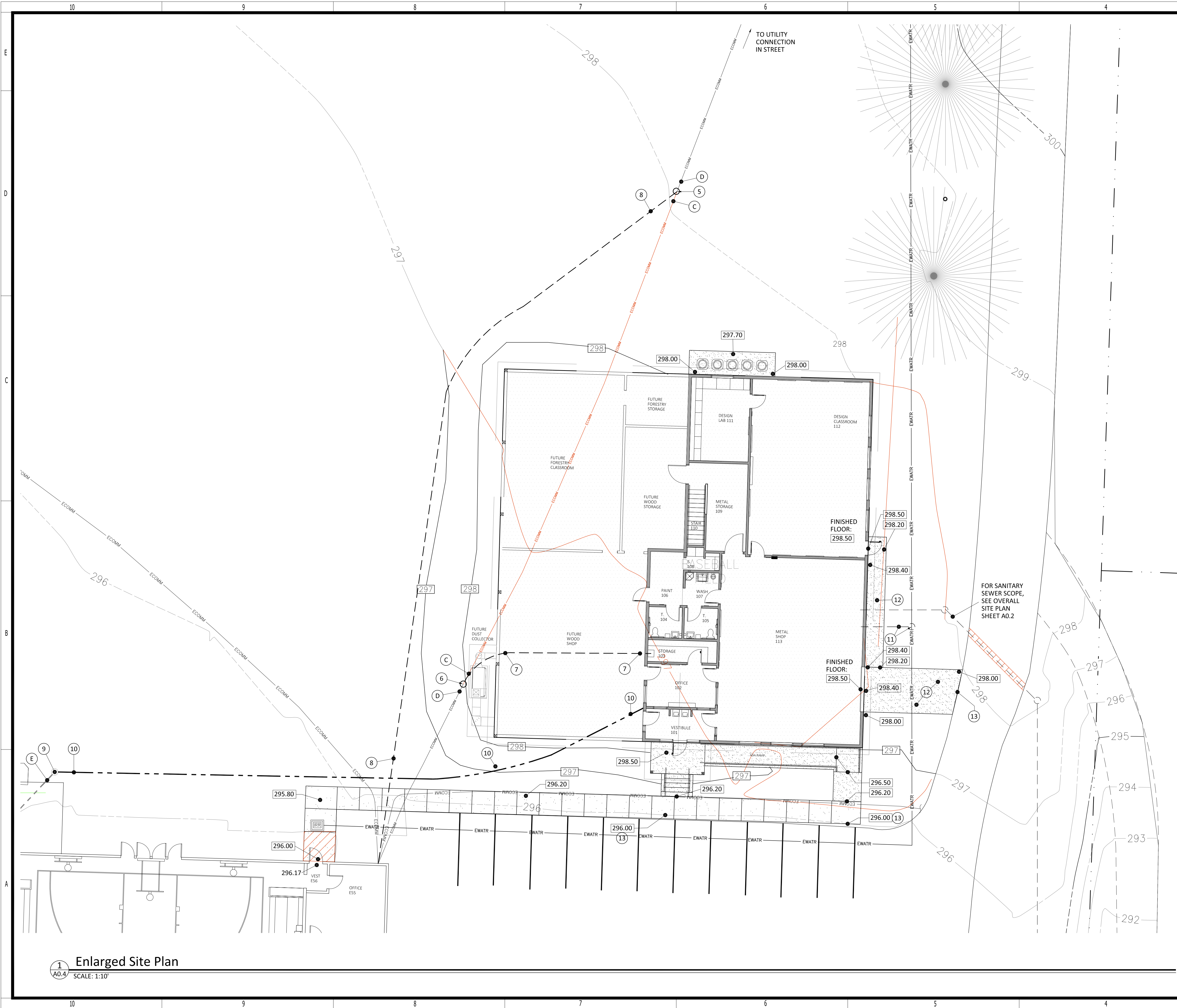
PHASES (PH):

ISSUE: 11-9-21

BID & AGENCY ISSUE

DRAWING NO.

A0.2
VOC - CTIL SHOP BUILDING
PHASING & SANITARY SEWER
SITE PLAN



General Notes
APPLICABLE TO THIS SHEET ONLY

| | | |
|---|---------------------------------|---------------------------|
| 1 - CROSS SLOPE ALL NEW EXTERIOR CONCRETE PAVING TO DRAIN | (X*) Typical (x)-# | Height Above Fin. Floor |
| | (NIC) Not in Contract | Typical (x)-# |
| | (UNO) Unless Noted | Unless Noted |
| | (X) Otherwise | Number or Quantity |
| 2 - THE CONTRACTOR SHALL RESTORE ALL DISTURBED LANDSCAPING TO ITS ORIGINAL CONDITION AT PROJECT COMPLETION. | (FFE) Existing Fin. Floor Elev. | Existing Fin. Floor Elev. |
| | (FF) New Fin. Floor Elev. | New Fin. Floor Elev. |
| | (TOW) Top of Foundation Wall | Top of Foundation Wall |

3 - PROJECT STAGING AREA AND SITE ACCESS WILL BE DISCUSSED AT THE ON-SITE PRE-BID MEETING

Legend

| | |
|--------------------------|---------------------|
| 90.0 NEW ELEVATIONS | (S) SLOPE DIRECTION |
| 90.0 EXISTING ELEVATIONS | |

Keyed Notes
Applicable to this Sheet Only
NOTE: DEMOLITION SHOWN IS PRESCRIPTIVE IN NATURE - IT SHALL BE THE RESPONSIBILITY OF THE CONTRACTOR TO PERFORM ALL REQUIRED DEMOLITION TO ACCOMPLISH THE COMPLETED NEW OR REMODELED CONDITION SHOWN ON THE PROJECT DOCUMENTS.

- | | |
|--|---|
| DEMOLITION & EXISTING NOTES: | NEW WORK NOTES: |
| (A) EXISTING SANITARY SEWER - DO NOT DISTURB. | (1) (N) SANITARY SEWER LINE - 4" ID., ABS/PVC (AS PER CITY REQUIREMENT) SLOPE NO LESS THAN 1:100 & NO MORE THAN 20%. MAINTAIN 3' GROUND COVER MINIMUM. ROUTE AS SHOWN TO AVOID OLD GROWTH TREES. |
| (B) SAW CUT - AT EXISTING ASPHALT PAVING AS REQUIRED FOR UTILITY. DO NOT OVER CUT. | (2) SANITARY SEWER LINE CONNECTION - PROVIDE CONNECTION TO CITY UTILITY SEWER LINE. CONNECTION POINT IT MADE DOWNSTREAM FROM LIFT STATION, VERIFY REQUIREMENTS OF CONNECTION WITH CITY. |
| (C) (D) FIBER OPTIC CONDUIT & REMOVE CABLE - SELECTIVELY DEMOLISH FIBER OPTIC CONDUIT AND CABLE AND READY FOR RE-ROUTE. | (3) (N) SANITARY SEWER CHANGE IN DIRECTION - NO MORE THAN 45 DEGREES. |
| (D) RETAIN FIBER OPTIC CONDUIT - RETAIN EXISTING CONDUIT IN PLACE & RE-UTILIZE | (4) PATCH PAVEMENT - PATCH BACK PAVEMENT AS REQUIRED. |
| (E) EMPTY CONDUIT - FOR POWER SERVICE CONDUCTORS. | (5) (N/E) FIBER OPTIC CONDUIT INTERFACE (STREET) - SPLICE NEW CONDUIT INTO EXISTING STREET BOUND CONDUIT. |
| | (6) (N/E) FIBER OPTIC CONDUIT INTERFACE (NEW BUILDING) - SPLICE NEW CONDUIT INTO EXISTING VOC SHOP BOUND CONDUIT. |
| | (7) (N) FIBER OPTIC CONDUIT - ROUTE TO NEW BUILDING DATA RACK AS SHOWN |
| | (8) (N) FIBER OPTIC CONDUIT & CABLE - ROUTE CONDUIT TO (E) SCHOOL DATA ROOM & EXISTING IN PLACE CONDUIT. INSTALL NEW FIBER OPTIC CABLE FROM (E) SCHOOL TO (E) STREET CONNECTION POINT. |
| | (9) (N/E) POWER CONDUIT INTERFACE - FIT NEW CONDUIT TO EXISTING CONDUIT AS SHOWN |
| | (10) (N) POWER CONDUIT & CONDUCTORS - ROUTE CONDUIT TO NEW BUILDING, INSTALL CONDUCTORS AS PER ELECTRICAL SHEETS. |
| | (11) (N) DOMESTIC WATER - NEW POINT OF DELIVERY, TAP INTO EXISTING WATER LINE, SEE MECHANICAL SHEETS |
| | (12) (N) CONC. PAVING - NEW 4" CONC. PAVING, 3500 PSI, SLOPE AS INDICATED. CROSS SLOPE TO DRAIN, OVER 4" GRAVEL FILL COURSE AND COMPACTED BASE |
| | (13) MATCH FLUSH - NEW CONCRETE PAVING SHALL MATCH FLUSH WITH EXISTING ASPHALT / CONCRETE PAVING |

Keyed Details

1 Enlarged Site Plan
A0.4 SCALE: 1:10'



301 SOUTH 3rd STREET
ALSEA, OREGON 97324

ALSEA SCHOOL DISTRICT 1a.3: NEW VOC SHOP BUILDING



CB Construction
1202 Adams Avenue
LaGrande, OR 97850



STRAIGHTLINE
ARCHITECTURE

4521 South Cloverdale Road
Suite 102 - Boise, Idaho 83709
P: 208.991.0855
F: Scott@straightline.biz
W: www.straightlinearchitects.com

Date: 8-6-2021
Project: ALS-1821
Version History: V1.0
PHASES (PH):

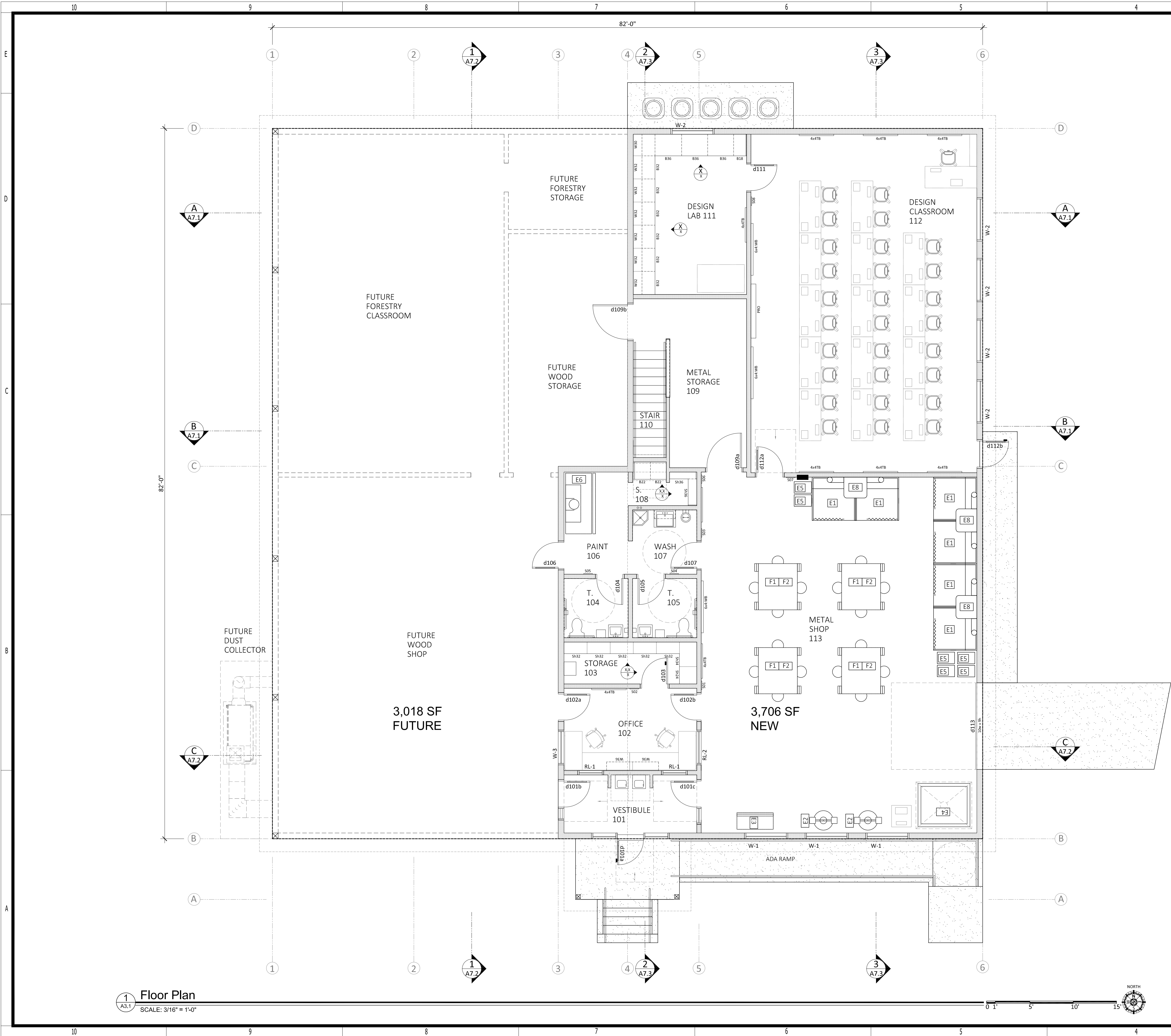
ISSUE: 11-9-21

BID & AGENCY ISSUE

DRAWING NO.

A0.4

ENLARGED SITE PLAN &
SITE TOPOGRAPHY



1 Floor Plan
SCALE: 3/16" = 1'-0"

General Notes

Applicable to Floor Plan Sheets only:

1. GENERAL ABBREVIATIONS:

(N) New
(D) Demolish
(E) Existing
(X) Height Above Fin. Floor
(TYP) Typical (unless
(N/C) Not in Contract
(UNO) Unless Notes Otherwise
(X) Number or Quantity

SPECIFIC ABBREVIATIONS:

BOT or B BOTTOM
BLDG BUILDING
CEL. CEILING
CONC CONCRETE
CONT CONTINUOUS
CMU CONCRETE MASONRY
EA EACH
EXT EXTERIOR
FF FINISH FLOOR
INT INTERIOR
MTL METAL
REF REFERENCED
TOS TOP OF SLAB
TP TOP PLATE
TO or T TOP OF
TOP TOP OF PARAPET
TAB TOP & BOTTOM
VERT (V) VERTICAL
HORIZ (H) HORIZONTAL

Keyed Notes

Applicable to floor Plan Sheets only

(A) ADA CLEARANCES - As shown, See code analysis sheet

(B) ROOF LINE - roof, eave, ridge, fascia line

(C) BEYOND/ABOVE.

Tack Boards & Dry Erase Boards

4x4 TB TACK BOARD - 48" w X 48" h, BOTTOM EDGE SHALL BE MOUNTED AT 36" ABOVE FINISHED FLOOR
6x4 WB WHITE BOARD - 72" w X 48" h, BOTTOM EDGE SHALL BE MOUNTED AT 36" ABOVE FINISHED FLOOR
PRO PROMETHEAN / PROJECTION AREA - OWNER SUPPLIED, SEE ELECTRICAL FOR EQUIPMENT REQUIREMENTS

Reference Notes

Applicable to Floor Plan Sheets only:

- COMPRESSED AIR LINES - SEE MECHANICAL DRAWINGS AND COMPRESSED AIR PLAN (A9-3) FOR DROP LOCATIONS.
- ADA CLEARANCE - AS SHOWN, SEE CODE ANALYSIS SHEET
- CORNER GUARD - 2" x 4' METAL WALL CORNER GUARD AT FRP-1 & GYPSUM BOARD WALLS
- BEYOND / ABOVE - AS GRAPHICALLY SHOWN
- ROOF LINE - ABOVE, ROOF, EAVE, RIDGE, FASCIA LINE
- MECHANICAL UNITS - SEE MECHANICAL SHEETS & ROOF PLAN
- FLOOR SINK - AS SHOWN, SEE PLUMBING PLANS, PROVIDE FRP AROUND SINK, SEE ROOM FINISH SCHEDULE
- FRP WALL PANELS - SMOOTH TEXTURE, COLOR WHITE, SEE ROOM FINISH SCHEDULE
- FIRE EXT. CABINET - SEE PROJECT MANUAL
- EYE WASH FIXTURE - SEE PLUMBING DRAWINGS
- ELECTRICAL PANEL - SEE ELECTRICAL DRAWINGS
- WALL LOUVER - SEE MECHANICAL DRAWINGS & EXTERIOR ELEVATIONS
- WELDING FUME REMOVAL SYSTEM - SEE MECHANICAL DRAWINGS, OWNER SUPPLIED, CONTRACTOR INSTALLED
- FURNITURE - NIC, SHOWN FOR GRAPHICAL PURPOSES ONLY
- SHOP EQUIPMENT - SEE SHOP EQUIPMENT / DIMENSION PLAN.
- LINE OF OH GARAGE DOOR - AT CEILING, AS SHOWN
- DRINKING FOUNTAIN - ADA, WITH BOTTLE FILLER, SEE PLUMBING PLANS
- DOWNSPOUTS - LOCATE AS SHOWN, TO DRAIN AT GRADE, SEE ROOFING PLAN
- STAIRS - SEE SECTIONS
- FURNITURE - ALL FURNITURE IS FOR GRAPHICAL PURPOSES ONLY & IS N.I.C.
- PROXIMITY CARD SENSOR / READER - HANDLE MOUNTED, SEE ELECTRICAL SHEETS
- OVERHEAD DOOR - STEEL, INSULATED, ONE PANEL WITH LITES. SEE ELEVATIONS & DOOR SCHEDULE
- LINE OF OH GARAGE DOOR - AT CEILING, AS SHOWN
- WOOD COLUMN - SEE STRUCTURAL DRAWINGS
- ADA RAMP - SEE DETAILS
- METAL HANDRAIL - SEE DETAILS
- WATER CHILLER & BOTTLE FILLER - SEE PLUMBING SHEETS.
- WINDOW SILL - PROVIDE WINDOW SILLS AS PER REFERENCED DETAIL

Equipment List Legend

SEE EQUIPMENT SCHEDULE ON SHEET XXX

E1 WELD BOOTH (OXY)
E2 GRINDER
E3 DROP BAND SAW
E4 PLASMA TABLE (EXISTING)
E5 WELDING CARTS
E6 PAINT BOOTH
E7 AIR COMPRESSOR
E8 WELDING EXTRACTOR UNIT
F1 SHOP TABLE
F2 SHOP STOOL

doxx DOOR
Sxx ROOM SIGNAGE
W-x WINDOW
RL-x RE-LITE INTERIOR WINDOW
Name XX ROOM NOMENCLATURE.

Wall Types

- INTERIOR: PARTITION & BEARING WALL: 2x4 (4) - 2x6 (6) WOOD STUDS AT 16" O.C. W/ SOLID BLOCKING @ 48" O.C. (SHOP SPACE & MEZZANINE) FACE W/ 5/8" TYPE 'X' GYP. BD. (FACE TOILET ROOM FACES WITH SMOOTH FRP PANELS AS PER ROOM FINISH SCHEDULE) PROVIDE SOUND BATT INSULATION AT ALL INTERIOR WALLS.
- INTERIOR: STAIRWELL / MEZZANINE HALF WALL: 2x6 STUDS AT 16" O.C. FACE AS PER ROOM FINISH PLAN. TOP W/ 8" WIDE FINISH CAP, HEIGHT VARIES, SEE STAIR SECTIONS
- INTERIOR: SOUND WALL: WOOD STUD WALL TYPE '6' & CEILING, WITH 2" SOUND INSULATION FACER PANELS (AT COMPRESSOR ROOM).
- EXTERIOR: AT BUILDING ENVELOPE TO 10' - 2x6 WOOD STUDS @ 16" O.C. ON SILL PLATE, ON SILL SEALER, W/ AB'S PER STRUCTURAL - INSULATE WALL WITH CLOSED CELL SPRAY POLYURETHANE FOAM (SPF) - R-27 - SEE FRAMING PLAN FOR LOCATION AND NAILING REQUIREMENTS FOR SHEAR WALLS & PANELS. - INSIDE FACE = 5/8" TYPE 'X' GYP. BD. (SEE SECTIONS)
- EXTERIOR FACE = VERTICALLY SET 7/16" OSB AND INFILTRATION BARRIER. SIDING: METAL WALL PANELS (SEE ELEVATIONS FOR SIZE & LOCATION OF TRIM, AND COLOR REQUIREMENTS.)
- EXTERIOR: AT BUILDING ENVELOPE ABOVE 10' - 2x4 WOOD STUDS @ 24" O.C. ADJACENT TO END WALL TRUSSESS ON SILL PLATE, ON SILL SEALER, W/ AB'S PER STRUCTURAL - INSULATE WALL WITH CLOSED CELL SPRAY POLYURETHANE FOAM (SPF) - R-27 - SEE WALL TYPE 'X'

NOT FOR
CONSTRUCTION
PROGRESS /
COORDINATION
SET ONLY

301 SOUTH 3rd STREET
ALSEA, OREGON 97324

ALSEA SCHOOL DISTRICT
1a.3: NEW VOC SHOP BUILDING

CB Const, Inc.
CB Construction
1202 Adams Avenue
LaGrande, OR 97850



STRAIGHTLINE
ARCHITECTURE

4521 South Cloverdale Road
Suite 102 - Boise, Idaho 83709
P: 208.991.0855
F: Scott@Straightline.biz
W: www.StraightlineArchitects.com

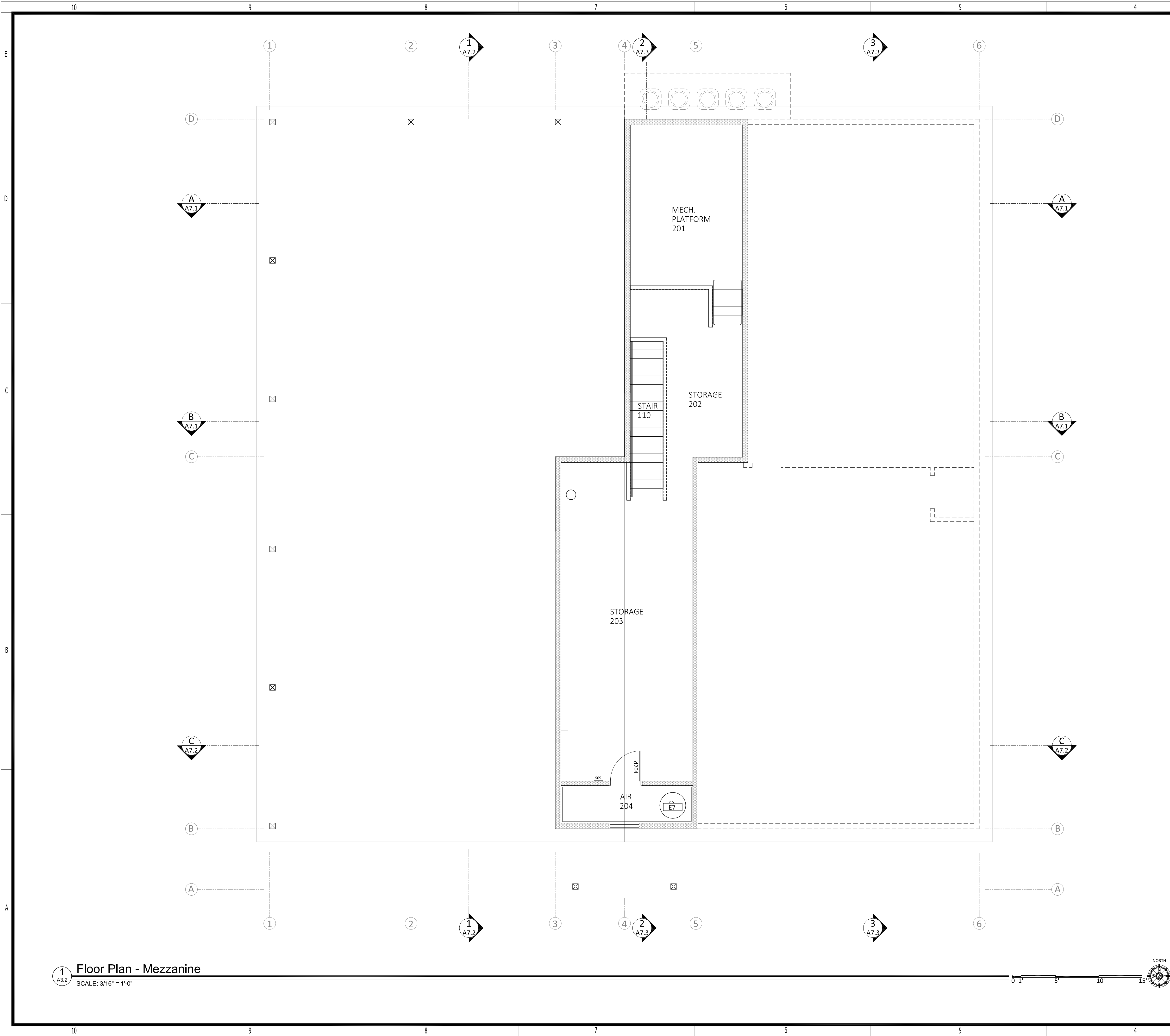
Date: 8-6-2021
Project: ALS-1821
Version History: V1.0
PHASES (PH):

ISSUE: 11-9-21

BID & AGENCY ISSUE

DRAWING NO.

A3.1
VOC / CTIL BUILDING
FLOOR PLAN - MEZZANINE



General Notes

Applicable to Floor Plan Sheets only:

GENERAL ABBREVIATIONS:

(N) New
(D) Demolish
(E) Existing
(X) Height Above Fin. Floor
(TYP) Typical (unless
(INC) Not in Contract
(UNO) Unless Notes Otherwise
(X) Number or Quantity

SPECIFIC ABBREVIATIONS:

BOT or B BOTTOM
BLDG BUILDING
CEL. CEILING
CONC CONCRETE
CONT CONTINUOUS
CMU MASONRY
EA EACH
EXT EXTERIOR
FF FINISH FLOOR
INT INTERIOR
MTL METAL
REF REFERENCED
TOS TOP OF SLAB
TP TOP PLATE
TO or T TOP OF
TOP TOP OF PARAPET
TAB TOP & BOTTOM
VERT (V) VERTICAL
HORIZ (H) HORIZONTAL

Keyed Notes

Applicable to floor Plan Sheets only

(A) ADA CLEARANCES - As shown, See code analysis sheet

(B) ROOF LINE - roof, eave, ridge, fascia line

(C) BEYOND/ABOVE.

Tack Boards & Dry Erase Boards

4x4 TB TACK BOARD - 48" w X 48" h, BOTTOM EDGE SHALL BE MOUNTED AT 36" ABOVE FINISHED FLOOR
6x4 WB WHITE BOARD - 72" w X 48" h, BOTTOM EDGE SHALL BE MOUNTED AT 36" ABOVE FINISHED FLOOR
PRO PROMETHEAN / PROJECTION AREA - OWNER SUPPLIED, SEE ELECTRICAL FOR EQUIPMENT REQUIREMENTS

Reference Notes

Applicable to Floor Plan Sheets only:

- COMPRESSED AIR LINES - SEE MECHANICAL DRAWINGS AND COMPRESSED AIR PLAN (A9-3) FOR DROP LOCATIONS.
- ADA CLEARANCE - AS SHOWN, SEE CODE ANALYSIS SHEET
- CORNER GUARD - 2" x 4' METAL WALL CORNER GUARD AT FRP-1 & GYPSUM BOARD WALLS
- BEYOND / ABOVE - AS GRAPHICALLY SHOWN
- ROOF LINE - ABOVE, ROOF, EAVE, RIDGE, FASCIA LINE
- MECHANICAL UNITS - SEE MECHANICAL SHEETS & ROOF PLAN
- FLOOR SINK - AS SHOWN, SEE PLUMBING PLANS, PROVIDE FRP AROUND SINK, SEE ROOM FINISH SCHEDULE
- FRP WALL PANELS - SMOOTH TEXTURE, COLOR WHITE, SEE ROOM FINISH SCHEDULE
- FIRE EXT. CABINET - SEE PROJECT MANUAL
- EYE WASH FIXTURE - SEE PLUMBING DRAWINGS
- ELECTRICAL PANEL - SEE ELECTRICAL DRAWINGS
- WALL LOUVER - SEE MECHANICAL DRAWINGS & EXTERIOR ELEVATIONS
- WELDING FUME REMOVAL SYSTEM - SEE MECHANICAL DRAWINGS, OWNER SUPPLIED, CONTRACTOR INSTALLED
- FURNITURE - NIC, SHOWN FOR GRAPHICAL PURPOSES ONLY
- SHOP EQUIPMENT - SEE SHOP EQUIPMENT / DIMENSION PLAN.
- LINE OF OH GARAGE DOOR - AT CEILING, AS SHOWN
- DRINKING FOUNTAIN - ADA, WITH BOTTLE FILLER, SEE PLUMBING PLANS
- DOWNSPOUTS - LOCATE AS SHOWN, TO DRAIN AT GRADE, SEE ROOFING PLAN
- STAIRS - SEE SECTIONS
- FURNITURE - ALL FURNITURE IS FOR GRAPHICAL PURPOSES ONLY & IS N.I.C.
- PROXIMITY CARD SENSOR / READER - HANDLE MOUNTED, SEE ELECTRICAL SHEETS
- OVERHEAD DOOR - STEEL, INSULATED, ONE PANEL WITH LITES, SEE ELEVATIONS & DOOR SCHEDULE
- LINE OF OH GARAGE DOOR - AT CEILING, AS SHOWN
- WOOD COLUMN - SEE STRUCTURAL DRAWINGS
- ADA RAMP - SEE DETAILS
- METAL HANDRAIL - SEE DETAILS
- WATER CHILLER & BOTTLE FILLER - SEE PLUMBING SHEETS.
- WINDOW SILL - PROVIDE WINDOW SILLS AS PER REFERENCED DETAIL

Equipment List Legend

SEE EQUIPMENT SCHEDULE ON SHEET XXX

E1 WELD BOOTH (OXY)
E2 GRINDER
E3 DROP BAND SAW
E4 PLASMA TABLE (EXISTING)
E5 WELDING CARTS
E6 PAINT BOOTH
E7 AIR COMPRESSOR
E8 WELDING EXTRACTOR UNIT
F1 SHOP TABLE
F2 SHOP STOOL

doxx DOOR
Sxx ROOM SIGNAGE
W-x WINDOW
RL-x RE-LITE INTERIOR WINDOW
Name XX ROOM NOMENCLATURE.

Wall Types

- INTERIOR: PARTITION & BEARING WALL: 2x4 (4) - 2x6 (6) WOOD STUDS AT 16" O.C. W/ SOLID BLOCKING @ 48" O.C. (SHOP SPACE & MEZZANINE) FACE W/ 5/8" TYPE 'X' GYP. BD. (FACE TOILET ROOM FACES WITH SMOOTH FRP PANELS AS PER ROOM FINISH SCHEDULE) PROVIDE SOUND BATT INSULATION AT ALL INTERIOR WALLS.
- INTERIOR: STAIRWELL / MEZZANINE HALF WALL: 2x6 STUDS AT 16" O.C. FACE AS PER ROOM FINISH PLAN, TOP W/ 8" WIDE FINISH CAP, HEIGHT VARIES, SEE STAIR SECTIONS
- INTERIOR: SOUND WALL: WOOD STUD WALL TYPE '6' & CEILING, WITH 2" SOUND INSULATION FACER PANELS (AT COMPRESSOR ROOM).
- EXTERIOR: AT BUILDING ENVELOPE TO 10' - 2x6 WOOD STUDS @ 16" O.C. ON SILL PLATE, ON SILL SEALER, W/ AB'S PER STRUCTURAL - INSULATE WALL WITH CLOSED CELL SPRAY POLYURETHANE FOAM (SPF) - R-27 - SEE FRAMING PLAN FOR LOCATION AND NAILING REQUIREMENTS FOR SHEAR WALLS & PANELS. - INSIDE FACE = 5/8" TYPE 'X' GYP. BD. (SEE SECTIONS) EXTERIOR FACE = VERTICALLY SET 7/16" OSB AND INFILTRATION BARRIER. SIDING: METAL WALL PANELS (SEE ELEVATIONS FOR SIZE & LOCATION OF TRIM, AND COLOR REQUIREMENTS.)
- EXTERIOR: AT BUILDING ENVELOPE ABOVE 10' - 2x4 WOOD STUDS @ 24" O.C. ADJACENT TO END WALL TRUSSES ON SILL PLATE, ON SILL SEALER, W/ AB'S PER STRUCTURAL - INSULATE WALL WITH CLOSED CELL SPRAY POLYURETHANE FOAM (SPF) - R-27 - SEE WALL TYPE 'X'

NOT FOR CONSTRUCTION
PROGRESS / COORDINATION SET ONLY

301 SOUTH 3rd STREET
ALSEA, OREGON 97324

ALSEA SCHOOL DISTRICT
1a.3: NEW VOC SHOP BUILDING



CB Construction
1202 Adams Avenue
LaGrande, OR 97850



STRAIGHTLINE ARCHITECTURE

4521 South Cloverdale Road
Suite 102 - Boise, Idaho 83709
P: 208.991.0855
F: Scott@Straightline.biz
W: www.StraightlineArchitects.com

Date: 8-6-2021
Project: ALS-1821
Version History: V1.0
PHASES (PH):

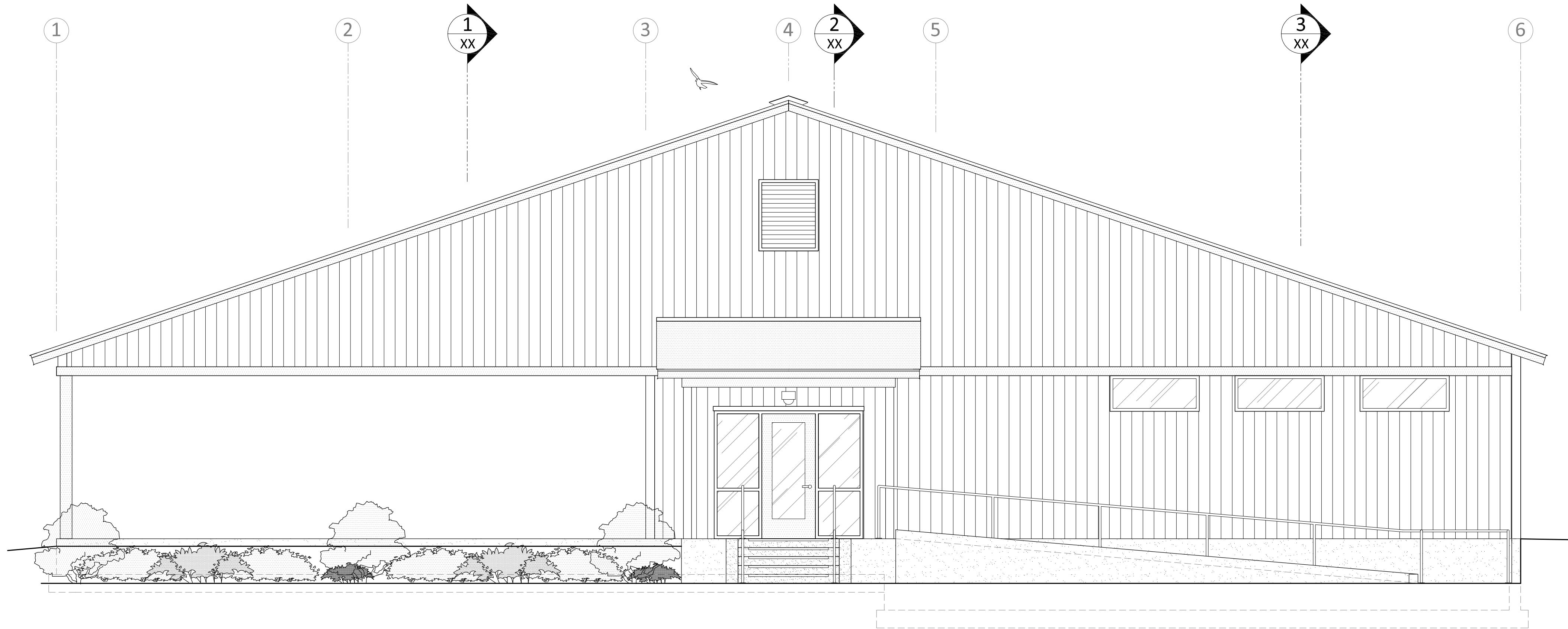
ISSUE: 11-9-21

BID & AGENCY ISSUE

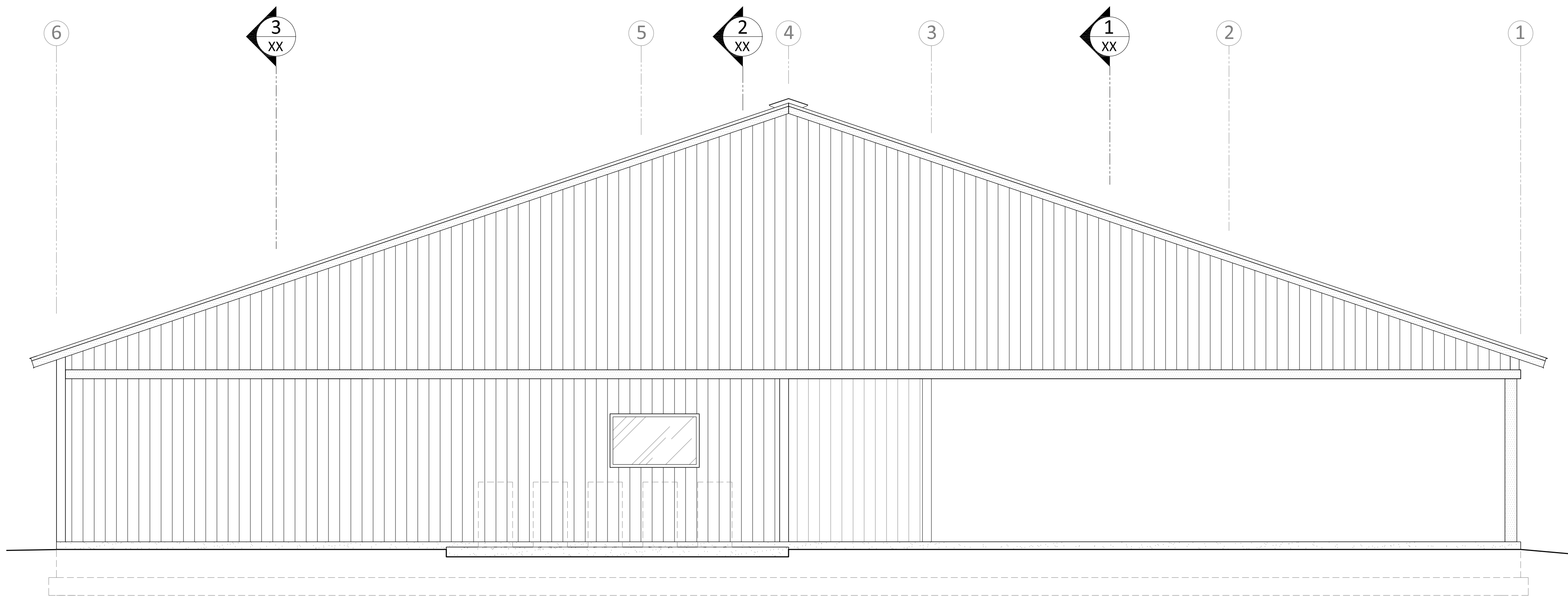
DRAWING NO.

A3.2

VOC / CTIL BUILDING
FLOOR PLAN - MEZZANINE



1 Exterior Elevation: South
SCALE: 1/4" = 1'-0"



2 Exterior Elevation: North
SCALE: 1/4" = 1'-0"

General Notes

Applicable to this Sheet only:

1 - EXTERIOR LOUVERS - for mechanical louver size & location, see mechanical sheets / coordinate with mechanical design build contractor.

2 - EXTERIOR LIGHTING - Mount all exterior lights as Dimensioned.

DIMENSIONING:

VERTICAL JOINT DIMENSIONS / LOCATIONS - are measured from the center of the panel or joint to the outside face of the foundation below.

HORIZONTAL JOINT DIMENSIONS / LOCATIONS - are determined by adjacent building materials such as windows, doors, metal panels, etc. locate joints as detailed and graphically shown.

GENERAL ABBREVIATIONS:
(N) New
(D) Demolish
(E) Existing
(X') Height Above Fin. Floor
(TYP) Typical (w/typ)
(NIC) Not in Contract
(UNO) Unless Noted Otherwise
(X) Number or Quantity

SPECIFIC ABBREVIATIONS:
BOT or B BOTTOM
BLDS BUILDING
CEIL CEILING
CONC CONCRETE
CONT CONTINUOUS
CMU MASONRY
EA EACH
EXT EXTERIOR
FF FINISH FLOOR
INT INTERIOR
MTL METAL
REF REFERENCED
TOS TOP OF SLAB
TP TOP PLATE
TO or T TOP OF
TOP TOP OF PARAPET
T&B TOP & BOTTOM
VERT (V) VERTICAL
HORZ (H) HORIZONTAL

ELEVATION - RELATIVE
DISTANCE STATED,
REFERENCE POINT
NOTATED.

Keyed Notes

- BUILDING LIGHTING, NEW - See electrical drawings, locate as dimensioned
- EMERGENCY LIGHTING - Locate as shown, centered above exit doors, see electrical drawings, recessed can at office entry
- MAN DOOR - Hollow Metal Door & Frame, Prime & Paint.
- CONCRETE / ASPHALT PAVEMENT - See Site Plan / Civil Sheets
- CONDENSERS - As SHOWN
- BEYOND - Building component beyond
- MECH. UNIT - See Mechanical Plans & Schedules.
- RIDGE VENT, CONT. - See Sections & project manual
- WALL LOUVER - See Mechanical Plans
- RETAINING WALL, NEW - Do not disturb, see site plan & Floor plan
- OVERHEAD DOOR - Insulated Metal Door Paint.
- WOOD COLUMN - See structural plan

Exterior Finish Materials & Schedule

See Project Manual for Material & Finish Requirements & Specifications

GENERAL NOTES

1 - REFER TO EXTERIOR ELEVATIONS FOR JOINTS IN METAL PANELS, MASONRY, ETC.

2 - ALIGN MATERIALS, SIDING, TRIM, ETC. AS GRAPHICALLY SHOWN & DIMENSIONED

METAL PANELS & TRIM

- MP-1 METAL FASCIA, SOFFIT, & GUTTER (COLOR) Pre-finished, Color 'MP1'
- MP-2 VERTICAL METAL WALL PANELS - (COLOR) Pre-finished, Color 'MP2' with ANGLED profile.

EXTERIOR PAINT

- P-1 PAINT - 'METAL DOORS & FRAMES', Exterior 'P1'

WINDOWS & DOORS

- HM DOOR & FRAME - HOLLOW METAL, PAINT AS SCHEDULED
- VWVL VINYL WINDOW - FACTORY FINISH, SEE PROJECT MANUAL

ROOFING

- ASH ASPHALT SHINGLE - Color as per architect from manuf. standard colors

LOUVERS

- LV-1 LOUVER: Pre-finished, Factory Fabricated, custom color

NOT FOR
CONSTRUCTION
PROGRESS /
COORDINATION
SET ONLY

301 SOUTH 3rd STREET
ALSEA, OREGON 97324

ALSEA SCHOOL DISTRICT
1a.3: NEW VOC SHOP BUILDING

CB Const, Inc



STRAIGHTLINE
ARCHITECTURE

Date: 8-6-2021
Project: ALS-1821
Version History: V1.0
PHASES (PH):

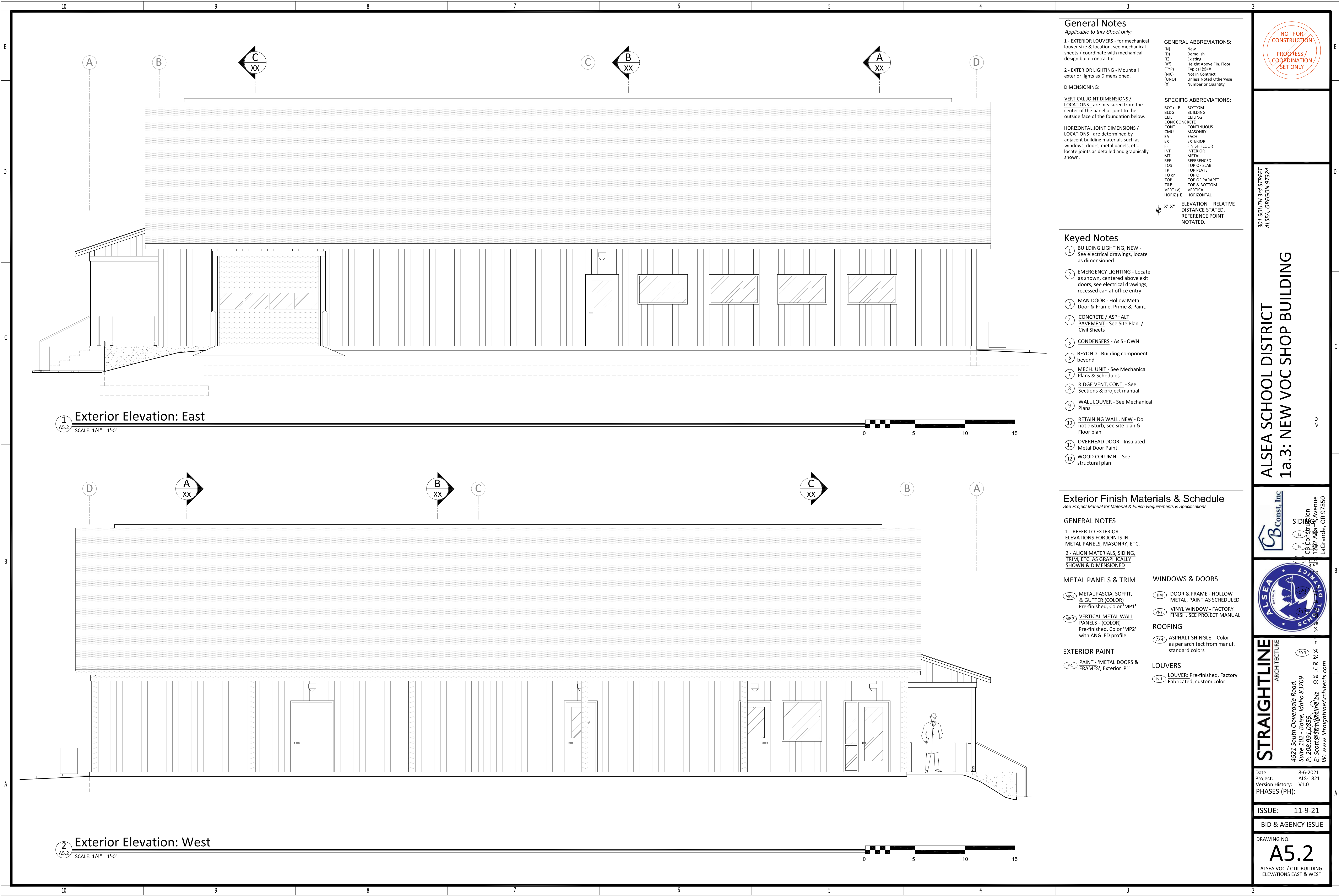
ISSUE: 11-9-21

BID & AGENCY ISSUE

DRAWING NO.

A5.1

ALSEA VOC / CTIL BUILDING
ELEVATIONS NORTH & SOUTH



General Notes
Applicable to this Sheet only:
1 - EXTERIOR LOUVERS - for mechanical louver size & location, see mechanical sheets / coordinate with mechanical design build contractor.
2 - EXTERIOR LIGHTING - Mount all exterior lights as Dimensioned.
DIMENSIONING:
VERTICAL JOINT DIMENSIONS / LOCATIONS - are measured from the center of the panel or joint to the outside face of the foundation below.
HORIZONTAL JOINT DIMENSIONS / LOCATIONS - are determined by adjacent building materials such as windows, doors, metal panels, etc. locate joints as detailed and graphically shown.

GENERAL ABBREVIATIONS:
(N) New
(D) Demolish
(E) Existing
(X') Height Above Fin. Floor
(TYP) Typical (w/typ)
(NIC) Not in Contract
(UNO) Unless Noted Otherwise
(X) Number or Quantity
SPECIFIC ABBREVIATIONS:
BOT or B BOTTOM
BLDS BUILDING
CEIL CEILING
CONC CONCRETE
CONT CONTINUOUS
CMU MASONRY
EA EACH
EXT EXTERIOR
FF FINISH FLOOR
INT INTERIOR
MTL METAL
REF REFERENCED
TOS TOP OF SLAB
TP TOP PLATE
TO or T TOP OF
TOP TOP OF PARAPET
T&B TOP & BOTTOM
VERT (V) VERTICAL
HORZ (H) HORIZONTAL

X'-X"

ELEVATION - RELATIVE
DISTANCE STATED,
REFERENCE POINT
NOTATED.

- Keyed Notes**
1 BUILDING LIGHTING, NEW - See electrical drawings, locate as dimensioned
2 EMERGENCY LIGHTING - Locate as shown, centered above exit doors, see electrical drawings, recessed can at office entry
3 MAN DOOR - Hollow Metal Door & Frame, Prime & Paint.
4 CONCRETE / ASPHALT PAVEMENT - See Site Plan / Civil Sheets
5 CONDENSERS - As SHOWN
6 BEYOND - Building component beyond
7 MECH. UNIT - See Mechanical Plans & Schedules.
8 RIDGE VENT, CONT. - See Sections & project manual
9 WALL LOUVER - See Mechanical Plans
10 RETAINING WALL, NEW - Do not disturb, see site plan & Floor plan
11 OVERHEAD DOOR - Insulated Metal Door Paint.
12 WOOD COLUMN - See structural plan

Exterior Finish Materials & Schedule
See Project Manual for Material & Finish Requirements & Specifications

GENERAL NOTES
1 - REFER TO EXTERIOR ELEVATIONS FOR JOINTS IN METAL PANELS, MASONRY, ETC.
2 - ALIGN MATERIALS, SIDING, TRIM, ETC. AS GRAPHICALLY SHOWN & DIMENSIONED

METAL PANELS & TRIM
MP-1 METAL FASCIA, SOFFIT, & GUTTER (COLOR) Pre-finished, Color 'MP1'
MP-2 VERTICAL METAL WALL PANELS - (COLOR) Pre-finished, Color 'MP2' with ANGLED profile.
EXTERIOR PAINT
P-1 PAINT - 'METAL DOORS & FRAMES', Exterior 'P1'

WINDOWS & DOORS
HM DOOR & FRAME - HOLLOW METAL, PAINT AS SCHEDULED
VWNL VINYL WINDOW - FACTORY FINISH, SEE PROJECT MANUAL
ROOFING
ASH ASPHALT SHINGLE - Color as per architect from manuf. standard colors
LOUVERS
LV-1 LOUVER: Pre-finished, Factory Fabricated, custom color

NOT FOR
CONSTRUCTION
PROGRESS /
COORDINATION
SET ONLY

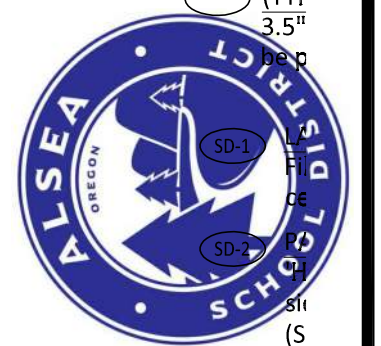
301 SOUTH 3rd STREET
ALSEA, OREGON 97324

ALSEA SCHOOL DISTRICT
1a.3: NEW VOC SHOP BUILDING

CB Const, Inc

SIDING
13
16
17
18
19
20
21
22
23
24
25
26
27
28
29
30
31
32
33
34
35
36
37
38
39
40
41
42
43
44
45
46
47
48
49
50
51
52
53
54
55
56
57
58
59
60
61
62
63
64
65
66
67
68
69
70
71
72
73
74
75
76
77
78
79
80
81
82
83
84
85
86
87
88
89
90
91
92
93
94
95
96
97
98
99
100

CB Const, Inc
1782 Adams Avenue
LaGrande, OR 97850



STRAIGHTLINE
ARCHITECTURE
4521 South Cloverdale Road
Suite 102 - Boise, Idaho 83709
P: 208.991.0855
F: Scott@straightlinearchitects.com
W: www.straightlinearchitects.com

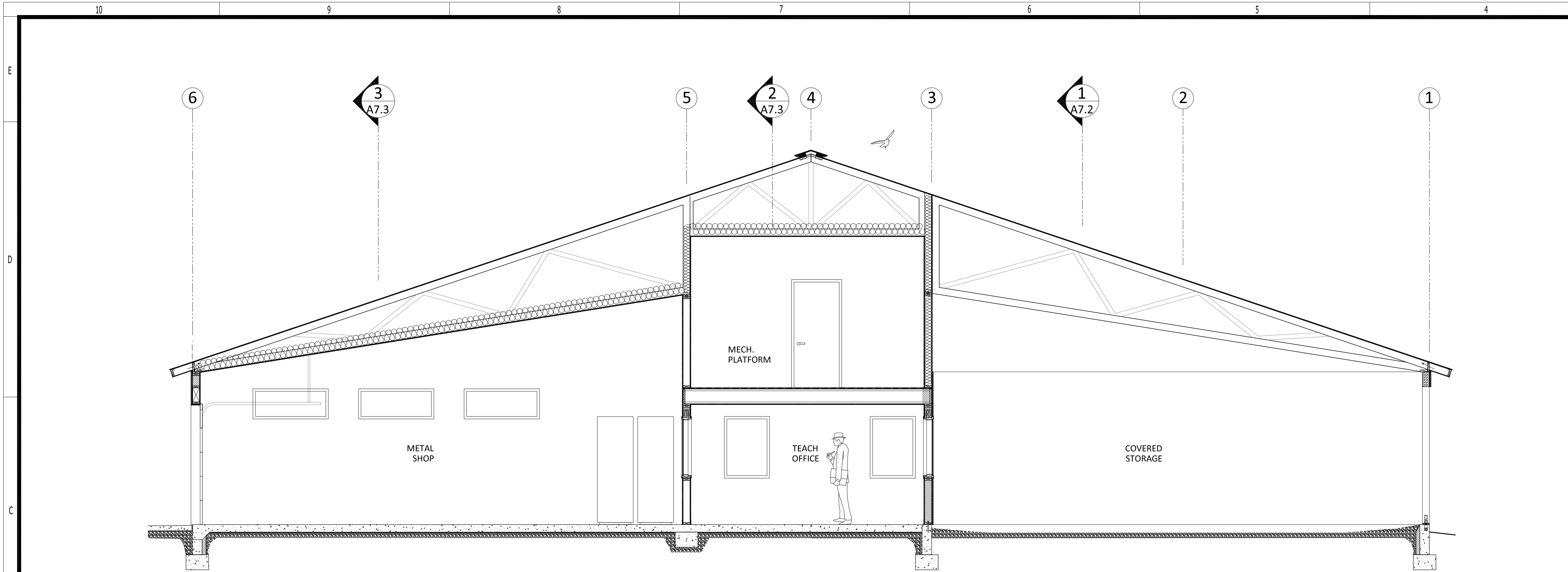
in
SC
212
na
14
C
se
15
16
17
18
19
20
21
22
23
24
25
26
27
28
29
30
31
32
33
34
35
36
37
38
39
40
41
42
43
44
45
46
47
48
49
50
51
52
53
54
55
56
57
58
59
60
61
62
63
64
65
66
67
68
69
70
71
72
73
74
75
76
77
78
79
80
81
82
83
84
85
86
87
88
89
90
91
92
93
94
95
96
97
98
99
100

Date: 8-6-2021
Project: ALS-1821
Version History: V1.0
PHASES (PH):

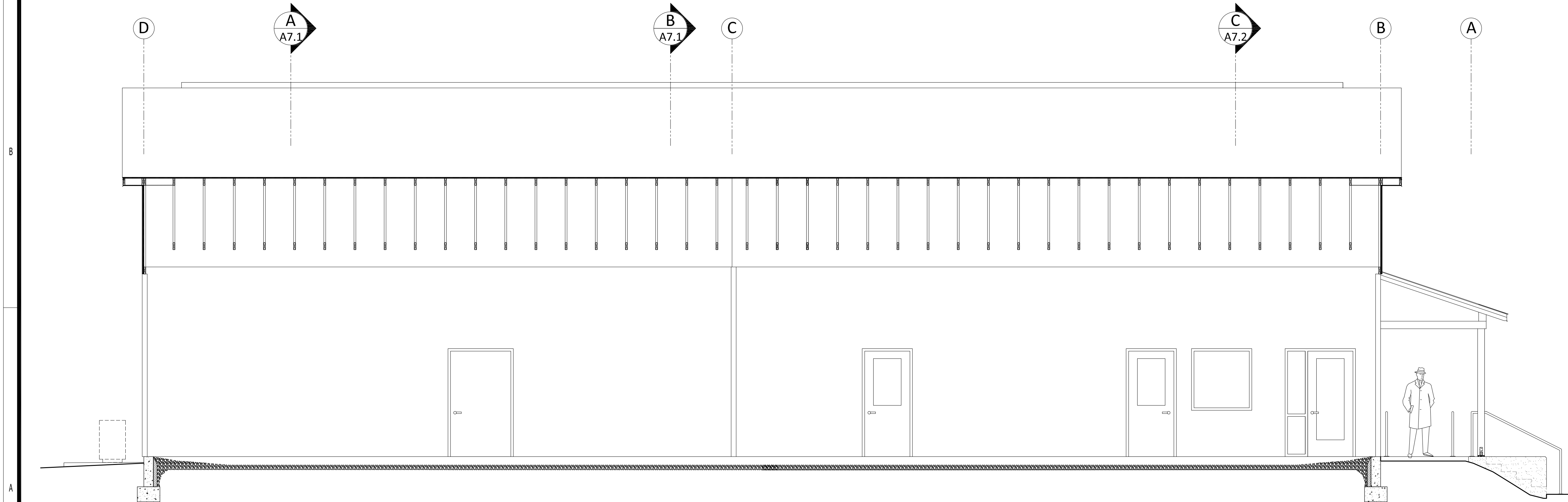
ISSUE: 11-9-21

BID & AGENCY ISSUE

DRAWING NO.
A5.2
ALSEA VOC / CTIL BUILDING
ELEVATIONS EAST & WEST



Building Section 'C'
SCALE: 1/4" = 1'-0"



Building Section '1'
SCALE: 1/4" = 1'-0"

General Notes

Applicable to this sheet only

GENERAL ABBREVIATIONS:

(N) New
(D) Demolish
(E) Existing
(A*) Height Above Fin. Floor
(TYP) Typical Value
(N/C) Not in Contract
(UNCL) Unless Noted Otherwise
(Q) Number or Quantity

Dim. Description Elevation

SPECIFIC ABBREVIATIONS:

BD or B BOTTOM BUILDING
CSL CEILING
CONC CONCRETE
CONT CONTINUOUS
CMU CONCRETE MASONRY
EA EXTERIOR
EXT EXTERIOR
INT INTERIOR
M METAL
MO MASONRY OPENING
REF REFERENCED
TOS TOP OF SLAB
TOM TOP OF MASONRY
TOP TOP OF
T&B TOP & BOTTOM
VERT (V) VERTICAL
HORIZ (H) HORIZONTAL

Keyed Notes

This Sheet only

NOTE: DEMOLITION SHOWN IS PRESCRIPTIVE IN NATURE - IT SHALL BE THE RESPONSIBILITY OF THE CONTRACTOR TO PERFORM ALL REQUIRED DEMOLITION TO ACCOMPLISH THE COMPLETED NEW OR REMODELED CONDITION SHOWN ON THE PROJECT DOCUMENTS.

- (AH) ATTIC HATCH: 22"x30" IN EXTERIOR SOFFIT, SEE PROJECT MANUAL
- (BA) ATTIC INSULATION (THERMAL)- R-60, GLASS FIBER UN-FACED LOOSE BATT (AT NEW CONSTRUCTION ONLY)
- (BW) WALL INSULATION (THERMAL)- R-27, SEE WALL TYPES & HORIZ. WALL SECTIONS
- (BS) INTERIOR WALL INSULATION (SOUND)- R-19, GLASS FIBER UN-FACED LOOSE BATT (AT NEW CONSTRUCTION ONLY)
- (CF) CONCRETE FOUNDATION WALL, FOOTINGS & PIERS - AS PER STRUCTURAL FOUNDATION PLAN
- (CS) EXTERIOR CONCRETE SLAB - SEE ARCHITECTURAL SITE PLAN & ASSOCIATED DETAILS.
- (FS) INTERIOR CONCRETE FLOOR SLAB - SEE STRUCTURAL FOUNDATION PLAN. **PROVIDE VAPOR BARRIER DIRECTLY BELOW CONCRETE SLAB AS DETAILED.**
- (FL) FLASHING - GALV. / PRE-FINISHED ROOF / WALL FLASHING - SEE DETAILS
- (GB) GYPSUM BOARD (X) LAYERS - LAYERS AS NOTED OF 5/8" TYPE 'X' GYPSUM BOARD. SEE WALL TYPES & SECTIONS FOR MORE DETAILS.
- (GT) GIRDER TRUSS - ENGINEERED PRE-MANUFACTURED WOOD TRUSSES, SEE STRUCTURAL DRAWINGS & APPROVED TRUSS SHOP DRAWINGS.
- (HL) HARD LID - AT TRUSS BOTTOM CHORD OR 2x6 CEILING JOISTS @ 16" O.C., 5/8" TYPE 'X' GYP. BD CEILING.
- (HM) HOLLOW METAL DOOR / WINDOW FRAME - WELD ALL FRAMES, SAND, PRIME, PAINT - INSULATE AT EXTERIOR, SEE DOOR & WINDOW DETAILS.
- (LB) LUMBER (DIMENSIONAL) - DIMENSIONAL WOOD STUD, BEAM, LEDGER, HEADER, ETC. - SEE FRAMING PLAN FOR SIZE, SPECIES & RATING.
- (LE) LUMBER (ENGINEERED) - BEAM, HEADERS, LEDGERS, SEE FRAMING PLAN FOR SIZING, CONNECTIONS, PLACEMENT.
- (MP) MECH. PLATFORM - 3" T&G FLOOR DECKING AT BOTTOM CHORD OF ROOF TRUSS.
- (MS) MECH. EQUIPMENT - AS GRAPHICALLY SHOWN, SEE MECHANICAL PLANS
- (RI) RIGID INSULATION - 3" EXTRUDED POLYSTYRENE AT FOUNDATION EXTERIOR & BELOW GRADE APPLICATIONS.
- (SD) SIDING / SOFFIT - SEE EXTERIOR ELEVATIONS & DETAILS
- (ST) SIDING TRIM - METAL, SEE EXTERIOR ELEVATIONS
- (VW) VINYL WINDOWS - TRIPLE PANE, TINTED, SEE WINDOW ELEVATIONS, ENERGY ANALYSIS & PROJECT MANUAL
- (WT) WOOD TRUSS - ENGINEERED PRE-MANUFACTURED WOOD TRUSSES, SEE STRUCTURAL DRAWINGS & APPROVED TRUSS SHOP DRAWINGS.

Reference Notes

This Sheet only

- (1) EXISTING RETAINING WALL - DO NOT DISTURB
- (2) TRENCH DRAIN - SEE FOR INFORMATION
- (3) EXISTING CHAIN LINK FENCE - DO NOT DISTURB
- (4) ABOVE / BEYOND - OBJECT ABOVE AND/OR BEYOND SHOP EQUIPMENT OF FURNISHINGS - SEE SHOP EQUIPMENT PLAN.
- (5) WALL LOUVER / GRILLE - SEE MECHANICAL DRAWINGS
- (6) DUCT - SEE MECHANICAL DRAWINGS
- (7) CABINETS / MILLWORK - SEE 10 SERIES SHEETS

Manufactured Trusses

ATTENTION MANUFACTURED TRUSS ENGINEER / MANUFACTURER:

1. MANUFACTURED WOOD TRUSS BOTTOM CHORD, TOP CHORD, & WEB LUMBER SIZES SHOWN ON THE PLANS ARE GRAPHICAL. IT SHALL BE THE RESPONSIBILITY OF THE ENGINEER / MANUF. TOP PROVIDE TRUSSES TO CONFORM TO INTENDED DESIGN AND SPACING OF FASCIA, SOFFIT, ETC. FASCIAS SHALL ALIGN CONT.

2. PANEL POINTS, PANEL LENGTHS, WEBBING, TRUSS PLATES, LATERAL BRACES, SPLICES, ETC. SHOWN ARE GRAPHICAL IN NATURE AND ARE SHOWN TO ILLUSTRATE ROUTING OF MECHANICAL DUCTWORK. IT IS THE RESPONSIBILITY OF THE TRUSS ENGINEER / MANUFACTURER TO PROVIDE A DESIGN CONFIGURATION WHICH PROVIDES CLEARANCE AROUND MAIN SUPPLY DUCTS AS REQUIRED

Wall Types

- (4) (6) (A) X INTERIOR: PARTITION & BEARING WALL: 2x4 (4) - 2x6 (6) WOOD STUDS AT 16" O.C. W/ SOLID BLOCKING @ 48" OC. (SHOP SPACE & MEZZANINE) FACE W/ 5/8" TYPE 'X' GYP. BD. (FACE TOILET ROOM FACES WITH SMOOTH FRP PANELS AS PER ROOM FINISH SCHEDULE) PROVIDE SOUND BATT INSULATION AT ALL INTERIOR WALLS.
- (IM) (B) X INTERIOR: STAIRWELL / MEZZANINE HALL WALL: 2x6 STUDS AT 16" O.C. FACE AS PER ROOM FINISH PLAN. TOP W/ 8" WIDE FINISH CAP, HEIGHT VARIES, SEE STAIR SECTIONS
- (IS) (C) X INTERIOR: SOUND WALL: WOOD STUD WALL TYPE '6' & CEILING, WITH 2" SOUND INSULATION FACER PANELS (AT COMPRESSOR ROOM).
- (X) (D) X EXTERIOR: AT BUILDING ENVELOPE TO 10' - 2x6 WOOD STUDS @ 16" O.C. ON SILL PLATE, ON SILL SEALER, W/ AB'S PER STRUCTURAL - INSULATE WALL WITH CLOSED CELL SPRAY POLYURETHANE FOAM (SPF) - R-27 - SEE FRAMING PLAN FOR LOCATION AND NAILING REQUIREMENTS FOR SHEAR WALLS & PANELS. - *INSIDE FACE* = 5/8" TYPE 'X' GYP. BD. (SEE SECTIONS) *EXTERIOR FACE* = VERTICALLY SET 7/16" OSB AND INFILTRATION BARRIER. *SIDING*: METAL WALL PANELS (SEE ELEVATIONS FOR SIZE & LOCATION OF TRIM, AND COLOR REQUIREMENTS.)
- (Xa) (E) X EXTERIOR: AT BUILDING ENVELOPE ABOVE 10' - 2x4 WOOD STUDS @ 24" O.C. ADJACENT TO END WALL TRUSSES ON SILL PLATE, ON SILL SEALER, W/ AB'S PER STRUCTURAL - INSULATE WALL WITH CLOSED CELL SPRAY POLYURETHANE FOAM (SPF) - R-27 - SEE WALL TYPE 'X'

NOT FOR
CONSTRUCTION
PROGRESS /
COORDINATION
SET ONLY

301 SOUTH 3rd STREET
ALSEA, OREGON 97324

ALSEA SCHOOL DISTRICT
1a.3: NEW VOC SHOP BUILDING

CB Const., Inc.
CB Construction
1202 Adams Avenue
LaGrande, OR 97850



STRAIGHTLINE
ARCHITECTURE

4521 South Cloverdale Road
Suite 102 - Boise, Idaho 83709
P: 208.991.0855
F: Scott@Straightline.biz
W: www.StraightlineArchitects.com

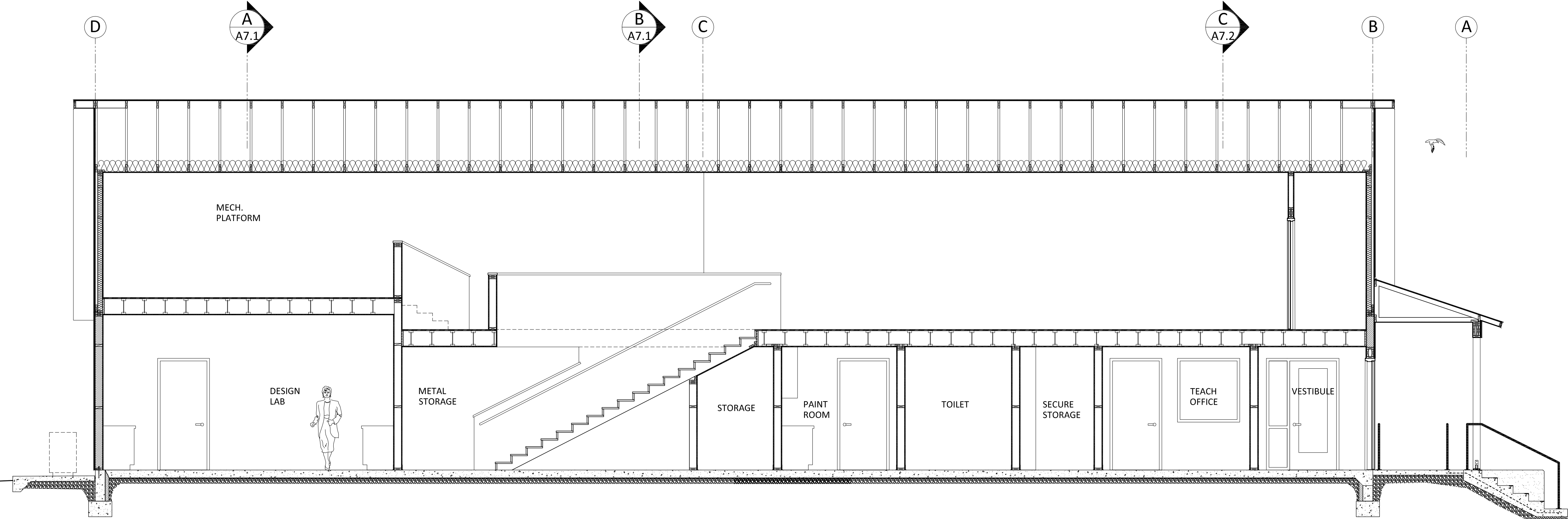
Date: 8-6-2021
Project: ALS-1821
Version History: V1.0
PHASES (PH):

ISSUE: 11-9-21

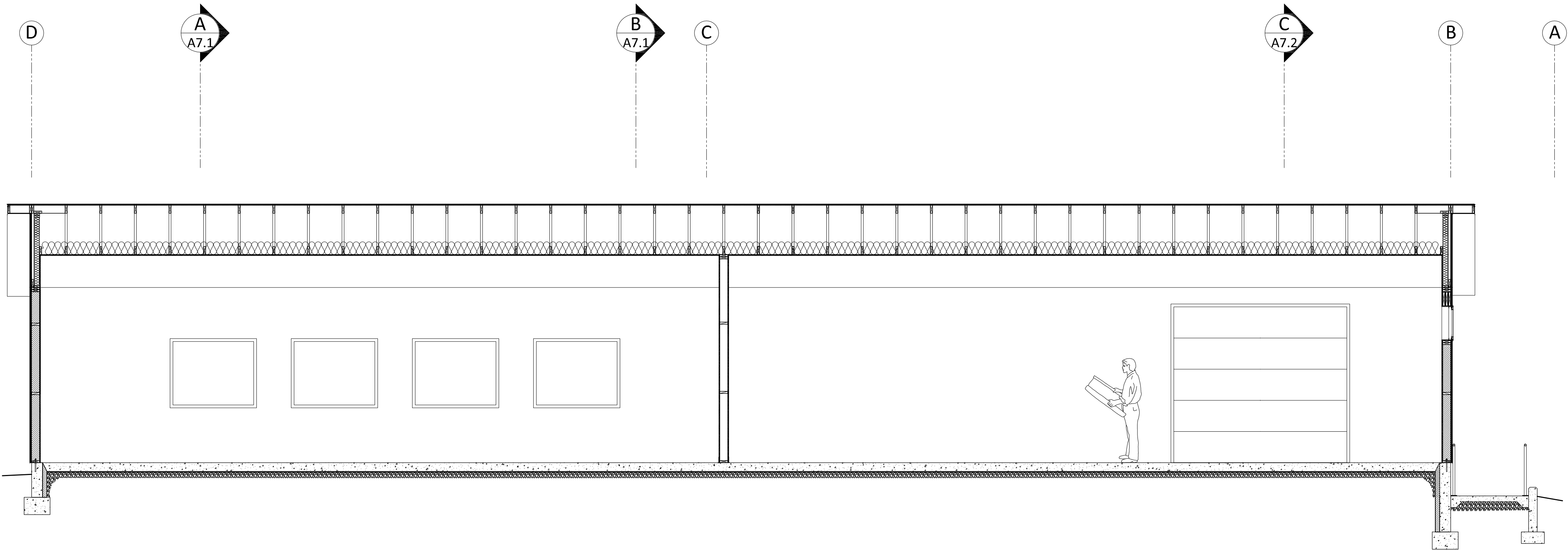
BID & AGENCY ISSUE

DRAWING NO.

A7.2
ALSEA VOC / CTIL BUILDING
BUILDING SECTIONS: C & 1



2 Building Section '2'
SCALE: 1/4" = 1'-0"



3 Building Section '3'
SCALE: 1/4" = 1'-0"

General Notes

Applicable to this sheet only

GENERAL ABBREVIATIONS:

(N) New
(D) Demolish
(E) Existing
(A) Height Above Fin. Floor
(TYP) Typical Value
(N/C) Not in Contract
(UNCL) Unless Noted Otherwise
(Q) Number or Quantity

Dim. Description Elevation

SPECIFIC ABBREVIATIONS:

BD or B BOTTOM BUILDING
CSL CEILING
CONC CONCRETE
CONT CONTINUOUS
CMU CONCRETE MASONRY
EXT EXTERIOR
INT INTERIOR
MFL FINISH FLOOR
METL METAL
MSO MASONRY OPENING
REF REFERENCED
TOS TOP OF SLAB
TOM TOP OF MASONRY
TYP TOP PLATE
T&B TOP & BOTTOM
VERT (V) VERTICAL
HORIZ (H) HORIZONTAL

Keyed Notes

This Sheet only

NOTE: DEMOLITION SHOWN IS PRESCRIPTIVE IN NATURE - IT SHALL BE THE RESPONSIBILITY OF THE CONTRACTOR TO PERFORM ALL REQUIRED DEMOLITION TO ACCOMPLISH THE COMPLETED NEW OR REMODELED CONDITION SHOWN ON THE PROJECT DOCUMENTS.

- (AH) ATTIC HATCH - 22"x30" IN EXTERIOR SOFFIT, SEE PROJECT MANUAL
- (BA) ATTIC INSULATION (THERMAL)- R-60, GLASS FIBER UN-FACED LOOSE BATT (AT NEW CONSTRUCTION ONLY)
- (BW) WALL INSULATION (THERMAL)- R-27, SEE WALL TYPES & HORIZ. WALL SECTIONS
- (BS) INTERIOR WALL INSULATION (SOUND)- R-19, GLASS FIBER UN-FACED LOOSE BATT (AT NEW CONSTRUCTION ONLY)
- (CF) CONCRETE FOUNDATION WALL, FOOTINGS & PIERS - AS PER STRUCTURAL FOUNDATION PLAN
- (CS) EXTERIOR CONCRETE SLAB - SEE ARCHITECTURAL SITE PLAN & ASSOCIATED DETAILS.
- (FS) INTERIOR CONCRETE FLOOR SLAB - SEE STRUCTURAL FOUNDATION PLAN. PROVIDE VAPOR BARRIER DIRECTLY BELOW CONCRETE SLAB AS DETAILED
- (FL) FLASHING - GALV. / PRE-FINISHED ROOF / WALL - FLASHING - SEE DETAILS
- (GB) GYPSUM BOARD (X) LAYERS - LAYERS AS NOTED OF "X" TYPE "X" GYPSUM BOARD. SEE WALL TYPES & SECTIONS FOR MORE DETAILS.
- (GT) GIRDER TRUSS - ENGINEERED PRE-MANUFACTURED WOOD TRUSSES, SEE STRUCTURAL DRAWINGS & APPROVED TRUSS SHOP DRAWINGS.
- (HL) HARD LID - AT TRUSS BOTTOM CHORD OR 2x6 CEILING JOISTS @ 16" O.C., 3" TYPE "X" GYP. BD CEILING.
- (HM) HOLLOW METAL DOOR / WINDOW FRAME - WELD ALL FRAMES, SAND, PRIME, PAINT - INSULATE AT EXTERIOR, SEE DOOR & WINDOW DETAILS.
- (LB) LUMBER (DIMENSIONAL) - DIMENSIONAL WOOD STUD, BEAM, LEDGER, HEADER, ETC. - SEE FRAMING PLAN FOR SIZE, SPECIES & RATING.
- (LE) LUMBER (ENGINEERED) - BEAM, HEADERS, LEDGERS, SEE FRAMING PLAN FOR SIZING, CONNECTIONS, PLACEMENT.
- (MP) MECH. PLATFORM - 3" T&G FLOOR DECKING AT BOTTOM CHORD OF ROOF TRUSS.
- (ME) MECH. EQUIPMENT - AS GRAPHICALLY SHOWN, SEE MECHANICAL PLANS
- (RI) RIGID INSULATION - 3" EXTRUDED POLYSTYRENE AT FOUNDATION EXTERIOR & BELOW GRADE APPLICATIONS.
- (SD) SIDING / SOFFIT - SEE EXTERIOR ELEVATIONS & DETAILS
- (ST) SIDING TRIM - METAL, SEE EXTERIOR ELEVATIONS
- (VW) VINYL WINDOWS - TRIPLE PANE, TINTED, SEE WINDOW ELEVATIONS, ENERGY ANALYSIS & PROJECT MANUAL
- (WT) WOOD TRUSS - ENGINEERED PRE-MANUFACTURED WOOD TRUSSES, SEE STRUCTURAL DRAWINGS & APPROVED TRUSS SHOP DRAWINGS.

Reference Notes

This Sheet only

- (1) EXISTING RETAINING WALL - DO NOT DISTURB
- (2) TRENCH DRAIN - SEE REFERENCED SEE DETAIL FOR INFORMATION
- (3) EXISTING CHAIN LINK FENCE - DO NOT DISTURB
- (4) ABOVE / BEYOND - OBJECT ABOVE AND/OR BEYOND SHOP EQUIPMENT OR FURNISHINGS - SEE SHOP EQUIPMENT PLAN.
- (5) WALL LOUVER / GRILLE - SEE MECHANICAL DRAWINGS
- (6) DUCT - SEE MECHANICAL DRAWINGS
- (7) CABINETS / MILLWORK - SEE 10 SERIES SHEETS

Manufactured Trusses

ATTENTION MANUFACTURED TRUSS ENGINEER / MANUFACTURER:

1. MANUFACTURED WOOD TRUSS BOTTOM CHORD, TOP CHORD, & WEB LUMBER SIZES SHOWN ON THE PLANS ARE GRAPHICAL. IT SHALL BE THE RESPONSIBILITY OF THE ENGINEER / MANUF. TOP PROVIDE TRUSSES TO CONFORM TO INTENDED DESIGN AND SPACING OF FASCIA, SOFFIT, ETC. FASCIAS SHALL ALIGN CONT.
2. PANEL POINTS, PANEL LENGTHS, WEBBING, TRUSS PLATES, LATERAL BRACES, SPLICES, ETC. SHOWN ARE GRAPHICAL IN NATURE AND ARE SHOWN TO ILLUSTRATE ROUTING OF MECHANICAL DUCTWORK. IT IS THE RESPONSIBILITY OF THE TRUSS ENGINEER / MANUFACTURER TO PROVIDE A DESIGN CONFIGURATION WHICH PROVIDES CLEARANCE AROUND MAIN SUPPLY DUCTS AS REQUIRED

Wall Types

- (4) (6) (A) X INTERIOR: PARTITION & BEARING WALL: 2x4 (4) - 2x6 (6) WOOD STUDS AT 16" O.C. W/ SOLID BLOCKING @ 48" OC. (SHOP SPACE & MEZZANINE) FACE W/ 5/8" TYPE "X" GYP. BD. (FACE TOILET ROOM FACES WITH SMOOTH FRP PANELS AS PER ROOM FINISH SCHEDULE) PROVIDE SOUND BATT INSULATION AT ALL INTERIOR WALLS.
- (IM) (B) X INTERIOR: STAIRWELL / MEZZANINE HALF WALL: 2x6 STUDS AT 16" O.C. FACE AS PER ROOM FINISH PLAN. TOP W/ 8" WIDE FINISH CAP, HEIGHT VARIES, SEE STAIR SECTIONS
- (IS) (C) X INTERIOR: SOUND WALL: WOOD STUD WALL TYPE '6' & CEILING, WITH 2" SOUND INSULATION FACER PANELS (AT COMPRESSOR ROOM).
- (X) (D) X EXTERIOR: AT BUILDING ENVELOPE TO 10' - 2x6 WOOD STUDS @ 16" O.C. ON SILL PLATE, ON SILL SEALER, W/ AB'S PER STRUCTURAL - INSULATE WALL WITH CLOSED CELL SPRAY POLYURETHANE FOAM (SPF) - R-27 - SEE FRAMING PLAN FOR LOCATION AND NAILING REQUIREMENTS FOR SHEAR WALLS & PANELS. - INSIDE FACE = 5/8" TYPE "X" GYP. BD. (SEE SECTIONS) EXTERIOR FACE = VERTICALLY SET 7/16" OSB AND INFILTRATION BARRIER. SIDING: METAL WALL PANELS (SEE ELEVATIONS FOR SIZE & LOCATION OF TRIM, AND COLOR REQUIREMENTS.)
- (Xa) (E) X EXTERIOR: AT BUILDING ENVELOPE ABOVE 10' - 2x4 WOOD STUDS @ 24" O.C. ADJACENT TO END WALL TRUSSES ON SILL PLATE, ON SILL SEALER, W/ AB'S PER STRUCTURAL - INSULATE WALL WITH CLOSED CELL SPRAY POLYURETHANE FOAM (SPF) - R-27 - SEE WALL TYPE "X"

NOT FOR CONSTRUCTION
PROGRESS / COORDINATION SET ONLY

301 SOUTH 3rd STREET
ALSEA, OREGON 97324

ALSEA SCHOOL DISTRICT
1a.3: NEW VOC SHOP BUILDING

CB Const., Inc.
CB Construction
1202 Adams Avenue
LaGrande, OR 97850



STRAIGHTLINE ARCHITECTURE

4521 South Cloverdale Road
Suite 102 - Boise, Idaho 83709
P: 208.991.0855
F: Scott@Straightline.biz
W: www.StraightlineArchitects.com

Date: 8-6-2021
Project: ALS-1821
Version History: V1.0
PHASES (PH):

ISSUE: 11-9-21

BID & AGENCY ISSUE

DRAWING NO.

A7.3
ALSEA VOC / CTIL BUILDING
BUILDING SECTIONS: 2 & 3